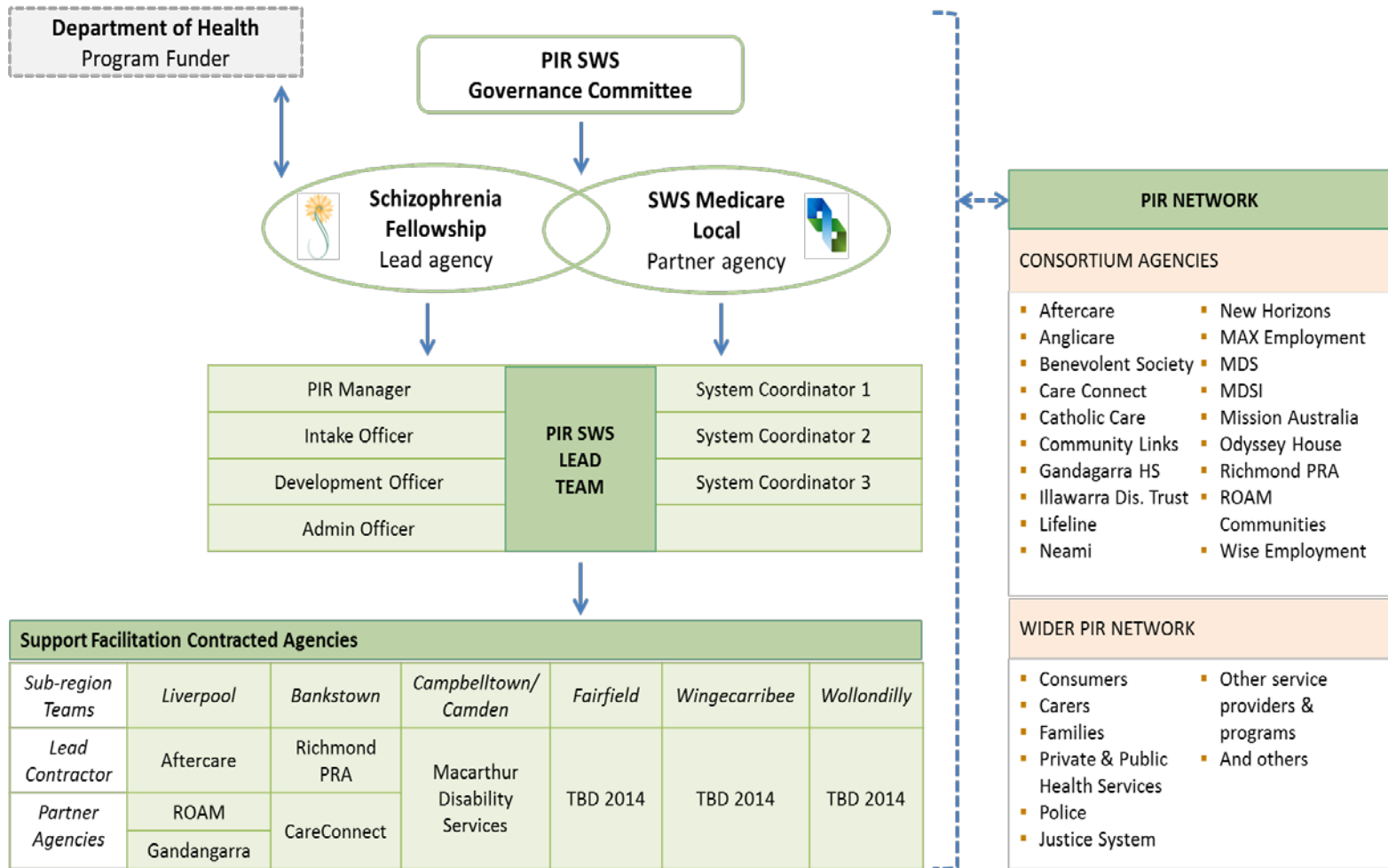




Maria Visotina-South Western Sydney PIR Manager

Chris Jones - PIR Senior Systems Coordinator

PIR SWS Entities



Unique Features

- SFNSW as lead agency **in partnership** with SWSML
 - Mutually accountable for outcomes
 - Joint team of 4 SFNSW and 3 SWSML staff
 - Co-located in one office
 - Shared governance
 - CEOs of both on Governance Committee with an independent, high profile chair
-

Pre-requisites for Success

- Commitment to a common goal of supporting the need of a complex client group and challenging system.
 - Mutual trust and transparency
 - Shared governance
 - Continuous communication
 - Respect for different organisational cultures
-

Strengths - Joint purpose, distinctive skills

SFNSW:

- Established reputation in the mental health field
 - Strong advocacy focus
 - Applies a recovery focus to all programs
 - Consumers and Carers are embedded into the organisation
-

Strengths - Joint purpose, distinctive skills

SWSML:

- Primary health org that has strong relationships with GP's, allied health and indigenous health providers.
 - Has a focus on improving the health of communities within South West Sydney through better coordination of services
 - Can use population health info to identify trends and gaps which assists in planning (eg: PIR gap analysis).
-

Thankyou
